
Shoot Location Tech Scouting Checklist

Fill out this checklist before you begin planning your film shoot so that you'll have the information handy, Don't worry if you don't know the answers to some of these questions — just keep them in mind as you're going through the planning process itself.





Shoot Location Tech Scouting Checklist

📖 STORY

Storytelling: Does the location meet the scene requirements, and for the director's tone?

Anachronisms: Does the setting fit the time period and story setting?

NOTES:

👁️ SIGHT

Wide Shot Test: Is a wide frame acceptable? Any problematic visual elements in the frame?

Indoor Staging: Does your cast, crew and gear fit inside? Any special production design needs

360 Test: Are there any problematic directions that should be avoided

Sunlight: Any sunlight considerations? In the morning? Noon? Afternoon? Evening?

Commercial Clearance: Any properties that require commercial clearance?

VFX Needs: Would anything need to be removed or added in the post?

NOTES:

🔊 SOUND

HVAC: Can you turn off heating, ventilation and air conditioning units?

Reverberation: Can you record clean dialogue? Do you need to dampen echoes in the space

Refrigerators: Can you turn off any noisy appliances or refrigerators?

NOTES:





Shoot Location Tech Scouting Checklist

SURROUNDINGS

- Roads & Traffic:** Any traffic concerns? Noise or continuity issues from vehicles or pedestrians?
- Schools:** Schoolyard noise? Will students enter or leave in large numbers? Continuity issues?
- Playgrounds:** Will playground or sports noise affect sound? Will children be in frame?
- Factories / Warehouses:** Any noise generated from machinery or vehicles? Any roadway issues?
- Gas Stations:** Will traffic noise or continuity problems result?
- Post Offices:** Will associated moving vehicles or trucks create roadway issues?
- Train Stations:** Will train traffic interfere with sound? Will trains appear in the frame?
- Train Tracks:** Will train traffic interfere with sound? Will trains appear in the frame?
- Airports:** Will airplane noise or activity affect sound? Any traffic concerns?
- Air Traffic:** Any significant air traffic overhead? Will it interfere with production sound?
- Subway:** Will subway noise interfere with production sound recording?
- Boat Traffic:** Loud boat engine or horn noises? Will they appear in frame? Continuity concerns?
- Staging Talent:** Is there a dedicated quiet space for talent? Extras? Dedicated bathrooms?
- Sufficient Parking:** Is there sufficient parking for talent, crew, and production vehicles?

NOTES:

WEATHER

- Temperature:** Will the location be too hot or cold? Is there temperature control?
- Rain / Snow:** Will precipitation have a potential impact on the shoot?
- Indoor Impacts:** Will sound from precipitation have a potential impact on the shoot?

NOTES:





Shoot Location Tech Scouting Checklist

POWER

- Accessible Outlets:** Are there enough outlets accessible? How many? Where?
- Access to Breakers:** Does the electrical crew have access to the circuit breaker box?
- Breaker Isolation:** How many breaker circuits? What's the rating of each? The whole system?
- Isolation of Hair & Makeup:** Is there a dedicated space and breaker for Hair & Makeup?
- Breaker Isolation for Others:** Any other departments that need isolated breakers?

NOTES:

FACILITIES

- Bathroom to Person Ratio:** How many people on set to every available bathroom?
- Access to Gas Shut off:** Do you have access to the gas shut off in case of emergency?
- Access to Water Shut Off:** Do you have access to the water shut off in case of emergency?

NOTES:





Shoot Location Tech Scouting Checklist



CONTRACTS

- Contract Signed:** Has the location owner signed a contact / location release?
- Contingency Plans:** Are there clauses for date changes and additions in the contract?
- Insurance / Liability Coverage:** Does your production insurance cover this location?

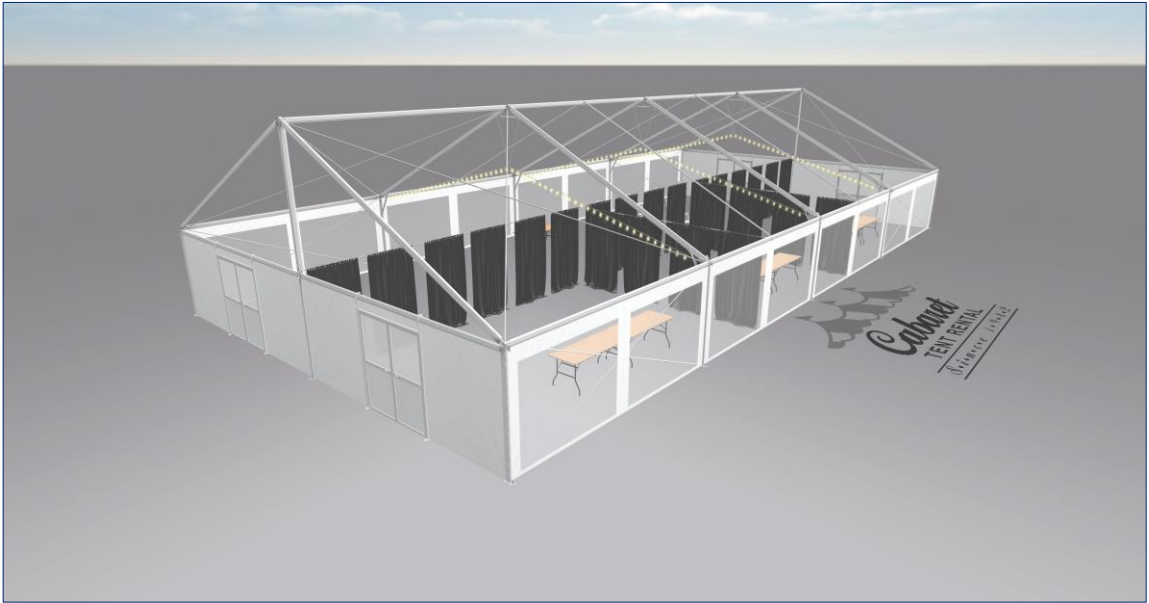
NOTES:





Shoot Location Tech Scouting Checklist

SAMPLE LAYOUT | PRODUCTION TENT – 40x80 JUMBOTRAC TENT



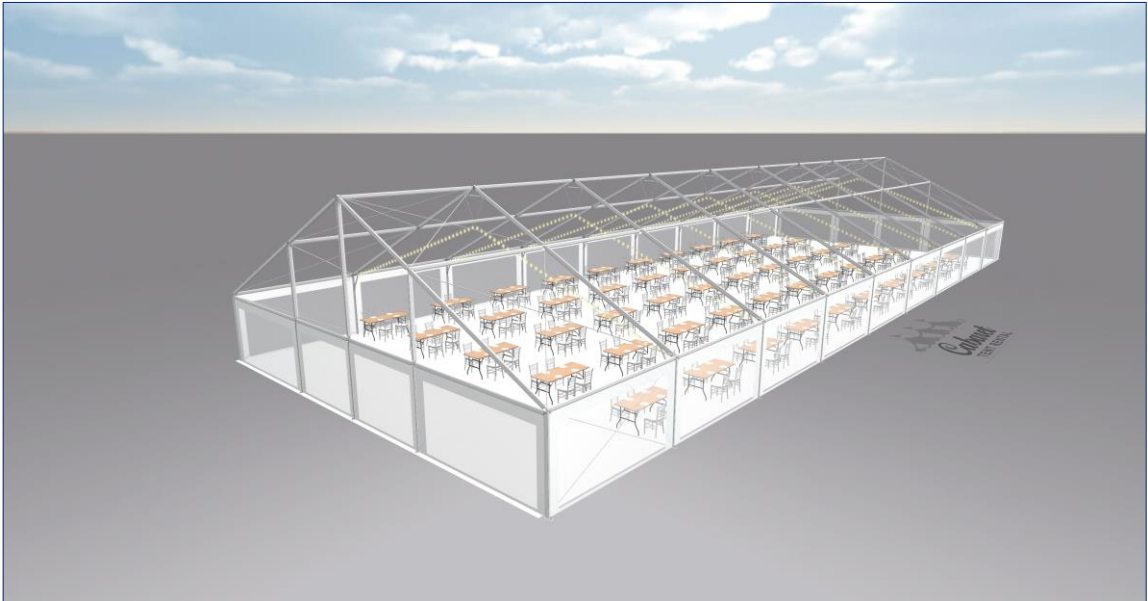
[Click Here to view 3D Tent Rendering](#)





Shoot Location Tech Scouting Checklist

SAMPLE LAYOUT | STAFF LUNCH CAFETERIA TENT – 50x135 JUMBOTRAC TENT



[Click Here to view 3D Tent Rendering](#)

